



**Contact Our Sales Department
(414) 727-7400**

The Natalia

Price: \$679,000 Includes Lot

Address: 1241 Four Winds Way
Hartland, WI

Subdivision: Four Winds
County: Waukesha

School District: Swallow Elementary School • W299 N5614 Highway E
Arrowhead High School • 700 North Ave

Directions: I-94W to 16W. Take Merton Avenue North to County Hwy. K. Take County Hwy. K West to Four Winds Subdivision. Entrance to Subdivision is on the North side of County Hwy. K.

Description:

Family Room: 20x20	Master Bedroom: 14x18	Bonus Room: 12x30
Den: 12x13	Bedroom 2: 12x14	Other: Future Lower Level with egress windows
Kitchen: 14x12	Bedroom 3: 12x12	Total Sq. Ft. 3,544
Dinette: 11x11	Bedroom 4: 11.5x14	Lot: 95
Dining: 12x12		

Amenities:

- ½ Acre Lot with Irrigation system & full landscaping
- 2 Panel Maple Arch Top Doors
- Premium width Colonial Trim and Milled Staircase
- Maple Cabinetry Throughout
- Bain Ultra, Bubble Massage Tub
- Ceramic Tile Bathrooms & Laundry room
- Granite Vanity in Master Bath
- Hardwood Maple Flooring
- Stone Veneer Fireplace with Maple Mantel
- Kohler Stainless Steel Kitchen Sink with Moen One Touch Faucet
- Stainless Steel GE Profile Microwave Oven, Dishwasher and refrigerator.
- Dacor Stainless Steel Electric Oven and Gas Range. also includes GE Stainless Steel drum Washer/Dryer and 2nd Refrigerator
- Central Vac
- Natural Stone Front Elevation
- Concrete Driveway and Walk
- 20' x 30' Concrete Patio

- Satin Nickel Hardware
- Moen Monticello Faucets Throughout

Energy Saving Features:

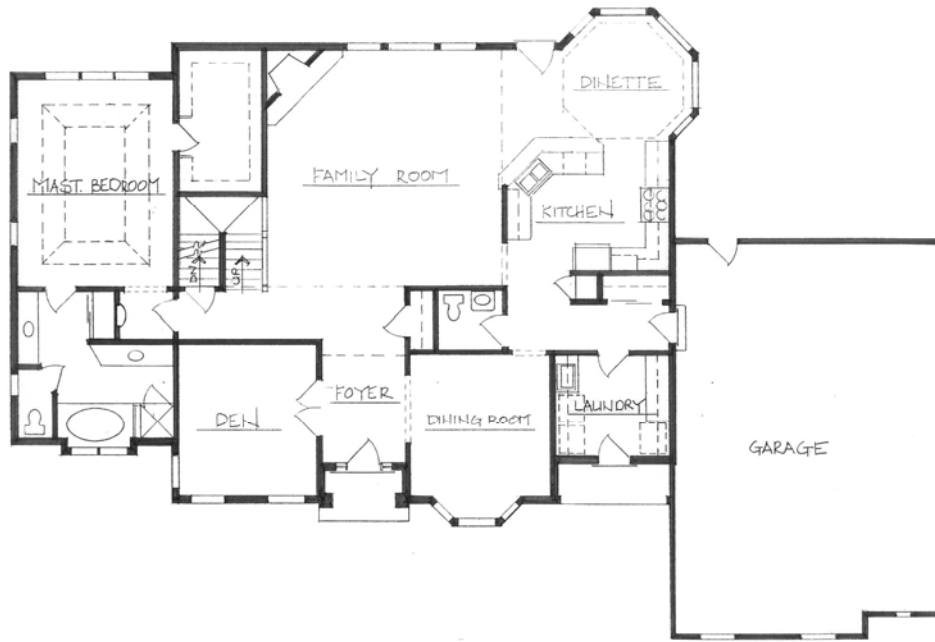
- Lenox Direct Vent Gas Fired Fireplace with Split Logs and Fan
- Anderson Vinyl Windows, Low 'E' Glass in Air Space with Pine Jambs
- Bryant 100,000 BTU 92% High Efficiency Gas Furnace with (3) zones of heating, with Media-Type Filter
- Bryant 4-Ton, 13-Seer Air Conditioner
- (3) Honeywell Programmable Thermostats
- Insulation R-50 Attic, R-21 Total Wall With Integral Vapor Barrier
- 75 Gal AO Smith Power Vent Gas Hot Water Heater
- Tyvek House Wrap

Quality Construction:

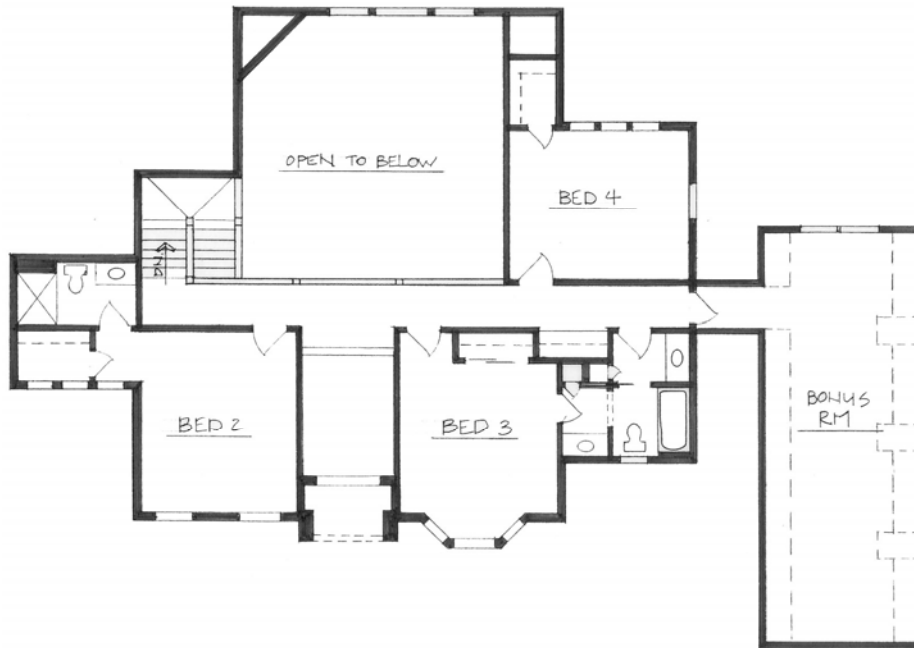
- 200 AMP Electric Service
- Laminate Closet Shelving
- 9' Poured Basement Walls with 1" Full Depth Insulation
- James Hardie Cement Board Siding w/ 15 year finish over 'Tyvek' House Wrap
- Mustee Laundry Sink
- Insinkerator 333 Garbage Disposal
- (2) Two Sided Steel Insulated 8' Overhead Door with 1/3 H.P. Liftmaster Operator

- 5/4" x 6" Miratek Exterior Trim on all Features
- 30 Year Architectural Dimensional Shingles
- Seamless Aluminum Gutters
- Lippert Molded Marble Vanity Tops
- Modular Tub and Shower
- Kohler Porcelain Toilet Bowls
- Granite Kitchen Counter Tops





FIRST FLOOR



SECOND FLOOR



Renderings and floor plans are the artist's conception. Details and dimensions may differ from actual plans and house. Amenities and features may vary. SCI Select Homes reserves the right to make changes without notice.